

The logo features a dark blue background with silhouettes of two human profiles facing each other. In the center, there is a 3D isometric illustration of a city skyline with various buildings. Some buildings are labeled with industry terms: 'BIOTECH', 'HEALTHCARE', 'PIPS', 'FINANCIAL SERVICES', and 'RETAIL'. The text '23rd Annual' is in white, 'MEET the MONEY' is in large green letters with a white outline, and 'Hotel Debt & Equity Conference' is in white below it.

23rd Annual

MEET the MONEY[®]

Hotel Debt & Equity Conference

Hotel Retail-Mixed Use

Moderator:

Jim Butler, Chairman, Global Hospitality Group[®]

Panelists:

John Alderson, Development Director, Westfield Corporation

Bruce Baltin, Senior Vice President, PKF Consulting

Guy Maisnik, Partner, Jeffer Mangels Butler & Mitchell LLP

Dupree Scovell, Managing Director, Woodbine Development Corporation

May 7, 2013

THE WESTIN

KIERLAND

RESORT & SPA
PHOENIX-SCOTTSDALE

Scottsdale, Arizona

Kierland Commons

Land Size: 38 Acres
Retail: 699,765 SF
Office: 124,214 SF
Restaurant: 64,034

Resort and Spa

Land Size: 262 Acres
Room Count: 732
Meeting Space: 199,000 SF

Condos

Land Size: 5.195 Acres
Units: 84

Partners

Woodbine, Hunt, Herberger,
Macerich/CalPERS, Starwood



This highly lauded 730-acre destination resort community includes Kierland Commons, The Westin Kierland Resort & Spa and The Plaza Lofts, all developed by Woodbine. In 2009, the Urban Land Institute honored Kierland Commons as one of 10 Awards for Excellence winners in the Americas — the organization's highest honor.





San Antonio, TX

Mixed-Use Redevelopment

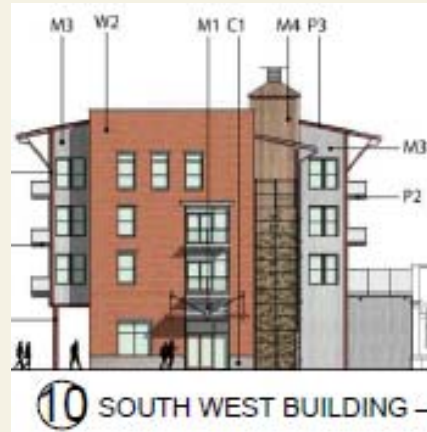
Hotel: 146 room, Kimpton

Project Start: 2011

Leasable Area: 157,000 SF

Pearl Parkway North: 58,000 SF
(retail, restaurant, office)

Pearl Parkway South: 98,600 SF
(retail, multifamily residential)



Project Summary

Woodbine was hired by an affiliate of Silver Ventures, Inc. to manage development of the 22-acre mixed-use former Pearl Brewery site on the River Walk in San Antonio. The Pearl Parkway project encompasses 157,000 square feet of leasable area and will be used for a combination of multifamily residential, retail, restaurants and office space





Tysons Corner, VA
(Washington, DC)

Hotel Development
 Project Start: 2012
 Site Size: 30,000 SF
 Building Size: 290,000 SF
 Stories: 17 floors
 Guest Rooms: 300
 Meeting Space: 15,000 SF
 Brand: Hyatt



Project Summary: Woodbine has been engaged by Macerich to develop this upper-upscale, four-star, full-service hotel at the marquee entrance of Tysons Corner mall. This project is being developed concurrently with an office tower and a residential tower. The design is modern/contemporary.

